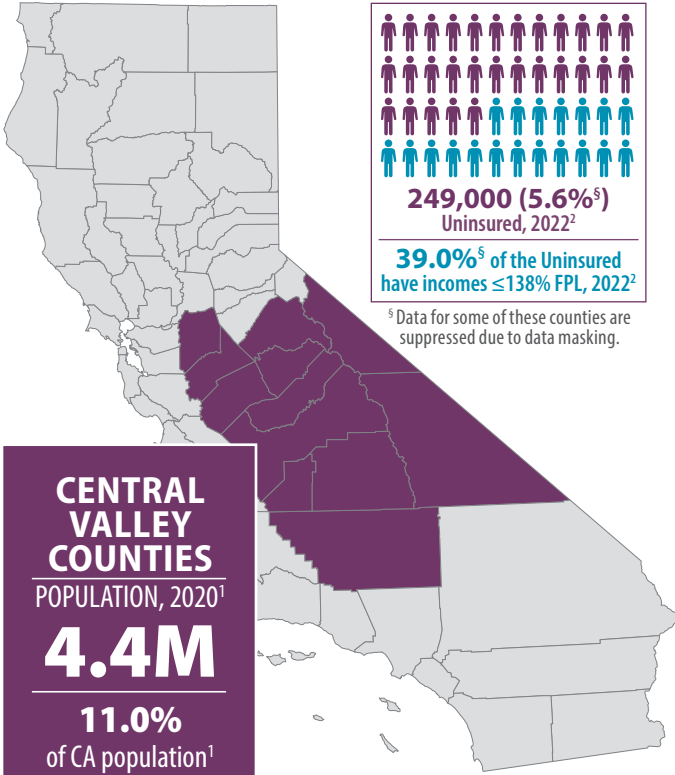


# Central Valley Counties

July 2024

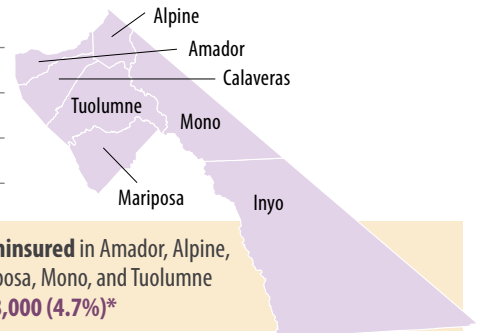
FRESNO, INYO, KERN, KINGS, MADERA, MARIPOSA, MERCED, MONO, SAN JOAQUIN, STANISLAUS, TULARE, TUOLUMNE



|             | Population <sup>1</sup> | Uninsured, 2022 <sup>2</sup> | Uninsured, Incomes ≤ 138% Federal Poverty Level (FPL), 2022 <sup>2</sup> |
|-------------|-------------------------|------------------------------|--|
| Fresno      | 1,008,654               | 42,000 (4.2%*)               | 17,000 (1.7%*)   |
| Kern        | 909,235                 | 40,000 (4.4%*)               | 13,000 (1.4%*)   |
| San Joaquin | 779,233                 | 44,000 (5.6%*)               | 13,000 (1.7%*)   |
| Stanislaus  | 552,878                 | 49,000 (8.9%)                | 20,000 (3.6%*)   |
| Tulare      | 473,117                 | 42,000 (8.9%*)               | 24,000 (5.1%*)   |
| Merced      | 281,202                 | 15,000 (5.3%*)               | 7,000 (2.5%*)  |
| Madera      | 156,255                 | 4,000 (2.6%*)                | -  |
| Kings       | 152,486                 | 5,000 (3.3%*)                | 3,000 (2.0%*)  |

\* Data for these counties are considered statistically unstable. | (-) Notes a value unavailable due to data masking.

|          | Population <sup>1</sup> |
|----------|-------------------------|
| Tuolumne | 55,620                  |
| Inyo     | 19,016                  |
| Mariposa | 17,131                  |
| Mono     | 13,195                  |



In the California Health Interview Survey dataset<sup>2</sup>, Inyo, Mariposa, Mono, and Tuolumne data for this metric are grouped together with ITUP-designated North Central counties: Alpine, Amador, and Calaveras. Data for the uninsured with incomes at or below 138 percent FPL are not available for these counties due to data masking. See ITUP's North Central Regional Coverage Fact Sheet for more data on Alpine, Amador, and Calaveras counties.

**FIGURE 1. Race/Ethnicity Among the Uninsured, 2022<sup>2</sup>**

| Percent by Race                           | County Population |       |       |       |       |       |       | Insured |        |         |         |         |         |         | Uninsured |        |       |       |       |       |    |   |
|---|-------------------|-------|-------|-------|-------|-------|-------|---------|--------|---------|---------|---------|---------|---------|-----------|--------|-------|-------|-------|-------|----|---|
|   | Latinx            | White | Black | AI/AN | Asian | NH/PI | 2+    | Latinx  | White  | Black   | AI/AN   | Asian   | NH/PI   | 2+      | Latinx    | White  | Black | AI/AN | Asian | NH/PI | 2+ |   |
| <b>Fresno</b>                             | 52.9%             | 29.9% | 5.1%  | 0.1%* | 10.9% | -     | 1.1%* | 92.8%*  | 99.4%* | 97.2%*  | 100.0%* | 99.3%*  | -       | 92.9%*  | 7.2%*     | -      | -     | -     | -     | -     | -  | - |
| <b>Kern</b>                               | 51.5%             | 36.7% | 6.9%* | 0.2%* | 2.7%* | -     | 1.9%* | 91.9%*  | 98.5%* | 100.0%* | 100.0%* | 100.0%* | -       | 100.0%* | 8.1%*     | -      | -     | -     | -     | -     | -  | - |
| <b>San Joaquin</b>                        | 40.9%             | 33.2% | 3.0%  | 1.1%* | 15.5% | 2.9%* | 3.4%  | 92.4%*  | 95.3%* | 100.0%* | 100.0%* | 97.4%*  | 100.0%* | 78.1%*  | 7.6%*     | -      | -     | -     | 2.6%* | -     | -  | - |
| <b>Stanislaus</b>                         | 47.1%             | 43.1% | 2.9%* | -     | 3.8%  | 1.1%* | 1.8%* | 90.9%   | 91.8%* | 55.7%*  | -       | 100.0%* | 100.0%* | 100.0%* | 9.1%      | 8.2%*  | -     | -     | -     | -     | -  | - |
| <b>Tulare</b>                             | 61.4%             | 29.6% | 4.2%* | 0.9%* | 2.6%* | -     | 1.1%* | 91.3%*  | 89.0%* | 100.0%* | 73.1%*  | 100.0%* | -       | 96.0%*  | 8.7%*     | 11.0%* | -     | -     | -     | -     | -  | - |
| <b>Merced</b>                             | 57.7%             | 29.3% | 2.9%* | -     | 7.3%* | -     | 2.7%* | 92.8%*  | 95.8%* | 100.0%* | -       | 100.0%* | -       | 100.0%* | 7.2%*     | -      | -     | -     | -     | -     | -  | - |
| <b>Madera</b>                             | 59.8%             | 35.0% | -     | -     | 2.4%* | -     | 2.2%* | 95.2%*  | 99.8%* | -       | -       | 100.0%* | -       | 100.0%* | 4.8%*     | -      | -     | -     | -     | -     | -  | - |
| <b>Kings</b>                              | 56.6%             | 32.5% | 2.8%* | 2.7%* | 2.2%* | -     | 3.3%* | 95.3%*  | 99.5%* | 100.0%* | 100.0%* | 67.1%*  | -       | 100.0%* | 4.7%*     | -      | -     | -     | -     | -     | -  | - |
| <b>Inyo, Mariposa, Mono, and Tuolumne</b> | 11.8%             | 79.3% | 0.8%* | 2.0%* | 3.6%* | -     | 2.6%* | 100.0%* | 94.9%* | 100.0%* | 79.8%*  | 100.0%* | -       | 87.9%*  | -         | 5.1%*  | -     | -     | -     | -     | -  | - |

In the California Health Interview Survey dataset<sup>2</sup>, Inyo, Mariposa, Mono, and Tuolumne data for these metrics are grouped together with ITUP-designated North Central counties: Alpine, Amador, and Calaveras. \*Data for these counties are considered statistically unstable. | (-) Notes are unavailable due to data masking.



**FIGURE 2. Employer-Sponsored Coverage, 2022<sup>2</sup>**

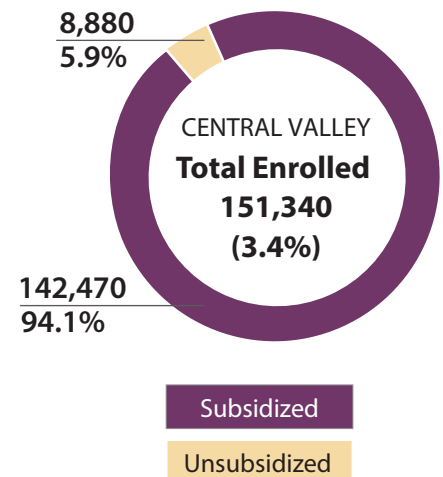
|  | Employer-Sponsored Coverage Among Central Valley Counties | Race/Ethnicity Breakdown Among Central Valley Counties with Employer-Sponsored Coverage |       |       |       |        |       |       |
|--|---|---|-------|-------|-------|--------|-------|-------|
|  |   | Latinx  | White | Black | AI/AN | Asian  | NH/PI | 2+    |
| <b>Fresno</b>  | 357,000 (36.1%)   | 41.2%   | 44.6% | -     | -     | 12.8%* | -     | 1.1%* |
| <b>Kern</b>  | 284,000 (33.1%)   | 47.2%   | 45.5% | 4.6%* | -     | 1.6%*  | -     | 0.9%* |
| <b>San Joaquin</b>   | 374,000 (49.0%)   | 41.3%   | 27.3% | 2.4%* | -     | 20.1%  | 4.0%* | 4.3%* |
| <b>Stanislaus</b>  | 212,000 (39.2%)   | 41.3%   | 45.5% | -     | -     | 7.1%*  | 2.0%* | 3.2%* |
| <b>Tulare</b>  | 156,000 (33.2%)   | 52.9%   | 36.7% | -     | 1.8%* | 5.4%*  | -     | 2.8%* |
| <b>Merced</b>  | 107,000 (38.2%)   | 47.5%   | 39.5% | -     | -     | 8.8%*  | -     | 2.5%* |
| <b>Madera</b>  | 42,000 (28.4%)  | 43.5%   | 47.9% | -     | -     | 3.9%*  | -     | 4.0%* |
| <b>Kings</b>   | 54,000 (38.6%)  | 38.6%   | 42.1% | 3.6%* | -     | 3.1%*  | -     | 6.9%* |
| <b>Amador, Alpine, Calaveras, Inyo, Mariposa, Mono, and Tuolumne**</b> | 73,000 (40.8%)  | 15.9%*  | 72.6% | -     | -     | 6.3%*  | -     | 3.5%* |

\*\* In the California Health Interview Survey dataset<sup>2</sup>, **Inyo, Mariposa, Mono, and Tuolumne** data for this metric are grouped together with ITUP-designated North Central counties: Alpine, Amador, and Calaveras. See ITUP's North Central Regional Coverage Fact Sheet for more data on Alpine, Amador, and Calaveras counties. | AI/AN = American Indian/Alaska Native | NH/PI = Native Hawaiian/Pacific Islander | 2+ = Two or More Races | \*Data for these counties are considered statistically unstable. | (-) Notes are unavailable due to data masking.

## COVERED CALIFORNIA

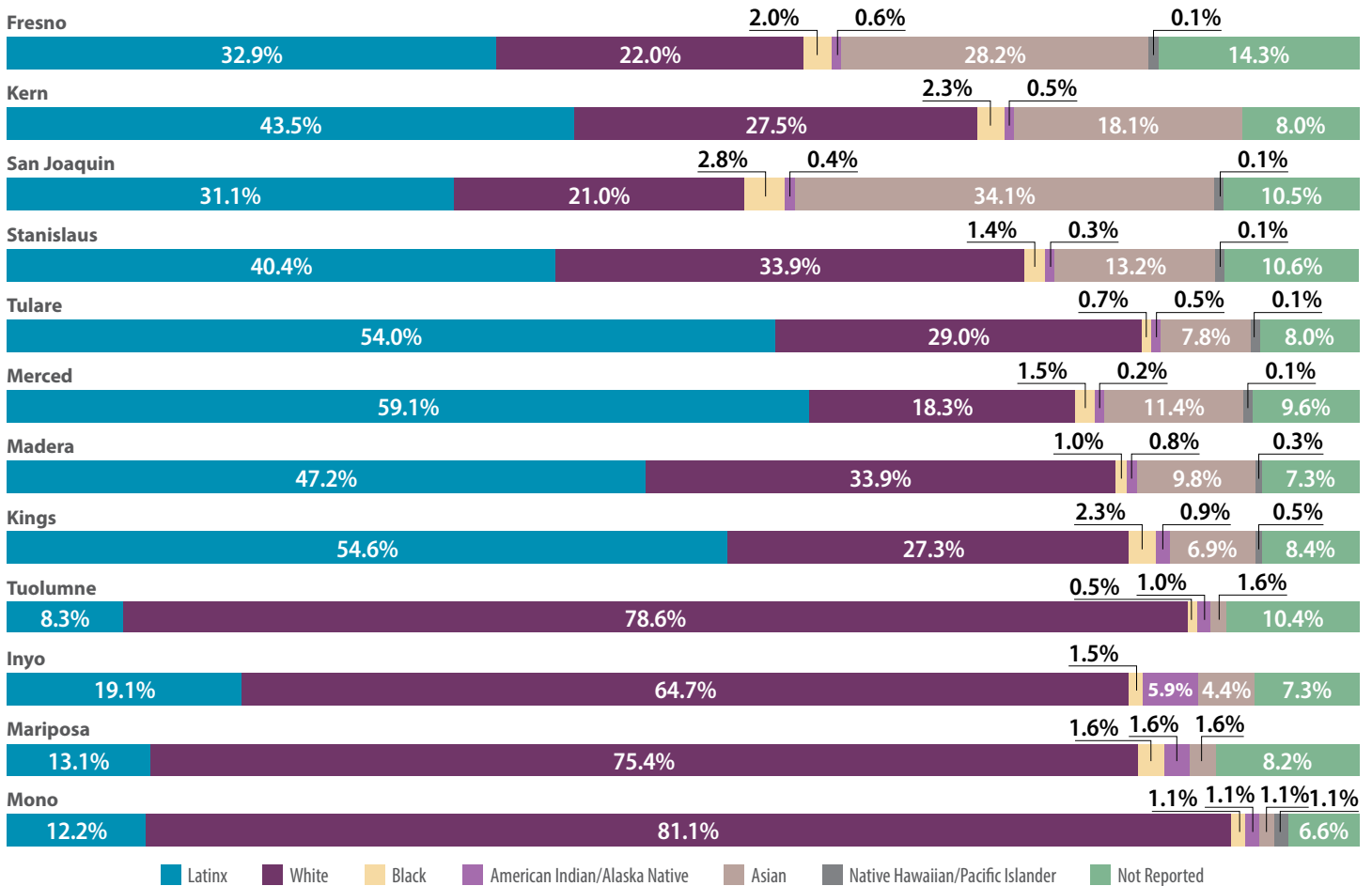
**FIGURE 3. Percent of Counties' Populations Enrolled in Covered California, December 2023<sup>3</sup>**

|                    | Total Enrollment | Subsidized Enrollees | Unsubsidized Enrollees |
|--------------------|------------------|----------------------|------------------------|
| <b>Fresno</b>      | 34,560 (3.4%)    | 31,940 (92.4%)       | 2,620 (7.6%)           |
| <b>Kern</b>        | 25,090 (2.8%)    | 23,490 (93.6%)       | 1,600 (6.4%)           |
| <b>San Joaquin</b> | 34,440 (4.4%)    | 32,500 (94.4%)       | 1,940 (5.6%)           |
| <b>Stanislaus</b>  | 21,140 (3.8%)    | 19,910 (94.2%)       | 1,230 (5.8%)           |
| <b>Tulare</b>      | 10,220 (2.2%)    | 9,710 (95.0%)        | 510 (5.0%)             |
| <b>Merced</b>      | 12,960 (4.6%)    | 12,730 (98.2%)       | 230 (1.8%)             |
| <b>Madera</b>      | 5,120 (3.3%)     | 4,760 (93.0%)        | 360 (7.0%)             |
| <b>Kings</b>       | 2,710 (1.8%)     | 2,530 (93.4%)        | 190 (7.0%)             |
| <b>Tuolumne</b>    | 2,380 (4.3%)     | 2,310 (97.1%)        | 70 (2.9%)              |
| <b>Inyo</b>        | 810 (4.3%)       | 780 (96.3%)          | 30 (3.7%)              |
| <b>Mariposa</b>    | 810 (4.7%)       | 790 (97.5%)          | 20 (2.5%)              |
| <b>Mono</b>        | 1,100 (8.3%)     | 1,020 (92.7%)        | 80 (7.3%)              |





**FIGURE 4. Covered California Enrollment by Race/Ethnicity, December 2023<sup>3</sup>**



Covered California's data privacy policy rounds all figures to the nearest 10. As a result, grand totals shown may be more than 100 percent. There was no data available for Native Hawaiian/Pacific Islander race/ethnicity category in Kern, Tuolumne, Inyo, and Mariposa counties.

**FIGURE 5. Covered California Enrollment by FPL, December 2023<sup>3</sup>**

|             | Under 138% FPL | Between 138% and 400% FPL | Between 400% and 600% FPL | Over 600% FPL |
|-------------|----------------|---------------------------|---------------------------|---------------|
| Fresno      | 5.7%           | 83.5%                     | 4.9%                      | 2.4%          |
| Kern        | 5.8%           | 83.9%                     | 5.3%                      | 2.0%          |
| San Joaquin | 5.2%           | 83.2%                     | 6.6%                      | 2.6%          |
| Stanislaus  | 3.1%           | 84.4%                     | 7.6%                      | 2.3%          |
| Tulare      | 4.7%           | 84.9%                     | 5.5%                      | 2.4%          |
| Merced      | 2.6%           | 87.0%                     | 7.5%                      | 2.1%          |
| Madera      | 4.9%           | 83.2%                     | 6.6%                      | 2.1%          |
| Kings       | 5.9%           | 83.0%                     | 6.6%                      | 1.8%          |
| Tuolumne    | 5.0%           | 79.9%                     | 9.2%                      | 3.8%          |
| Inyo        | 3.7%           | 79.1%                     | 11.1%                     | 6.2%          |
| Mariposa    | 3.7%           | 80.2%                     | 13.6%                     | 2.5%          |
| Mono        | 3.6%           | 69.1%                     | 13.6%                     | 9.1%          |

Enrollments where the FPL of the member is not known are not included here. Covered California's data privacy policy rounds all figures to the nearest 10. As a result, grand totals shown may be more than 100 percent.



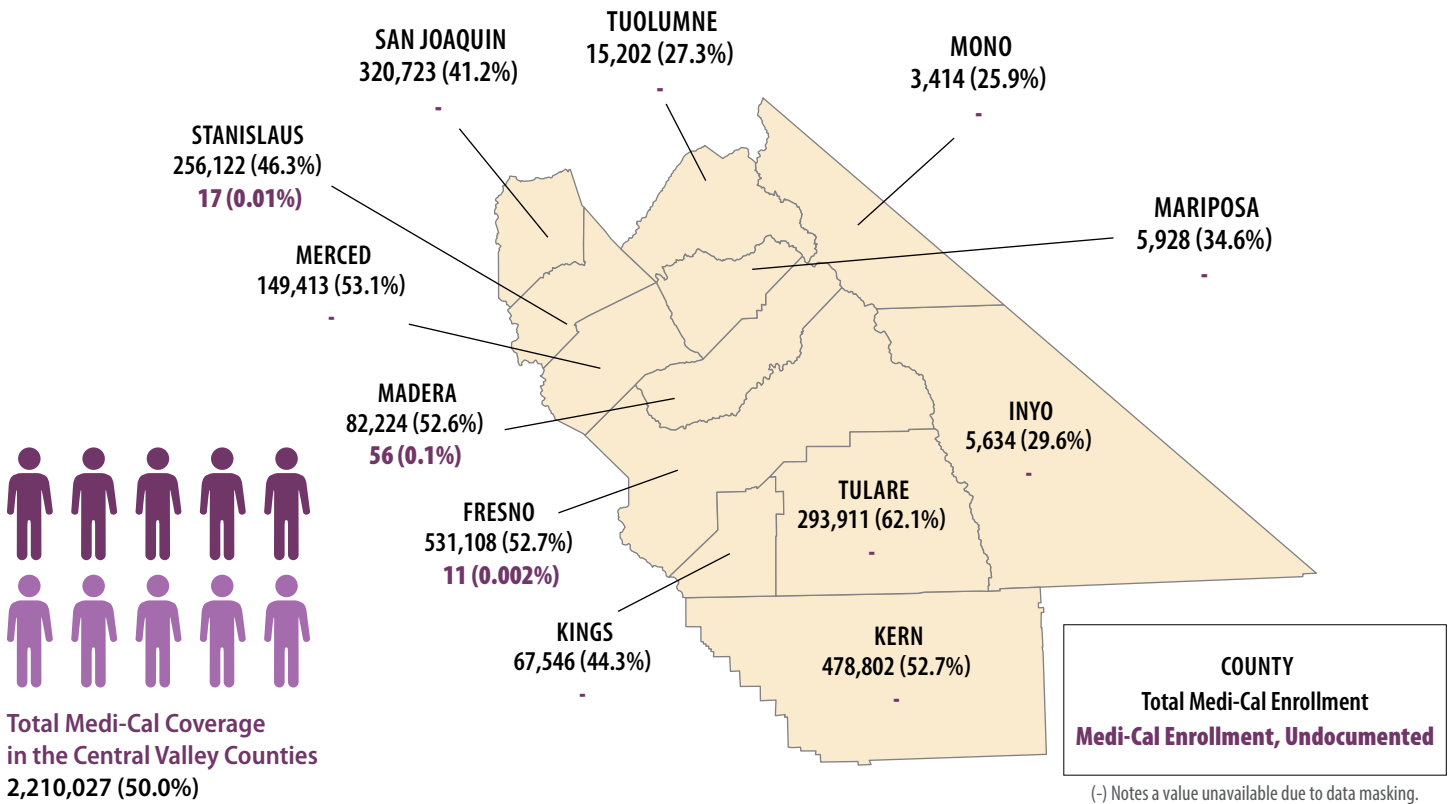
**FIGURE 6. Covered California Enrollment by Health Plan, December 2023<sup>3</sup>**

|                    | Aetna Health CVS | Anthem Blue Cross | Blue Shield | Health Net | Kaiser Permanente | LA Care Health Plan | Molina Healthcare | Oscar Health Plan | Sharp Health Plan | Valley Health Plan | Western Advantage Health |
|--------------------|------------------|-------------------|-------------|------------|-------------------|---------------------|-------------------|-------------------|-------------------|--------------------|--------------------------|
| <b>Fresno</b>      | 390              | 1,870             | 23,980      | 10         | 8,300             | 10                  | 10                | 10                | -                 | 10                 | -                        |
| <b>Kern</b>        | -                | 270               | 18,320      | 1,750      | 4,740             | 20                  | 10                | 10                | -                 | -                  | -                        |
| <b>San Joaquin</b> | 10               | 5,290             | 4,870       | 10         | 24,260            | 10                  | 10                | -                 | -                 | 10                 | 10                       |
| <b>Stanislaus</b>  | 10               | 4,890             | 3,560       | 10         | 12,680            | 10                  | -                 | 10                | -                 | -                  | -                        |
| <b>Tulare</b>      | 10               | 6,350             | 3,590       | 10         | 270               | 10                  | 10                | 10                | -                 | 10                 | -                        |
| <b>Merced</b>      | -                | 10,940            | 1,940       | -          | 70                | 10                  | -                 | 10                | -                 | 10                 | -                        |
| <b>Madera</b>      | 50               | 290               | 3,360       | 10         | 1,420             | -                   | -                 | -                 | -                 | 10                 | -                        |
| <b>Kings</b>       | 30               | 150               | 2,420       | 10         | 120               | -                   | -                 | -                 | -                 | -                  | -                        |
| <b>Tuolumne</b>    | -                | 1,230             | 1,130       | 10         | 10                | -                   | -                 | -                 | -                 | -                  | -                        |
| <b>Inyo</b>        | -                | 60                | 750         | -          | 10                | -                   | -                 | -                 | -                 | -                  | -                        |
| <b>Mariposa</b>    | -                | 550               | 240         | -          | 30                | -                   | -                 | -                 | 10                | -                  | -                        |
| <b>Mono</b>        | -                | 40                | 1,070       | -          | 10                | -                   | -                 | 10                | -                 | -                  | -                        |

Covered California's privacy policy rounds all figures to the nearest 10. As a result, grand totals shown may be slightly different from the totals in the individual plan data.  
 (-) Notes a value unavailable due to masking.

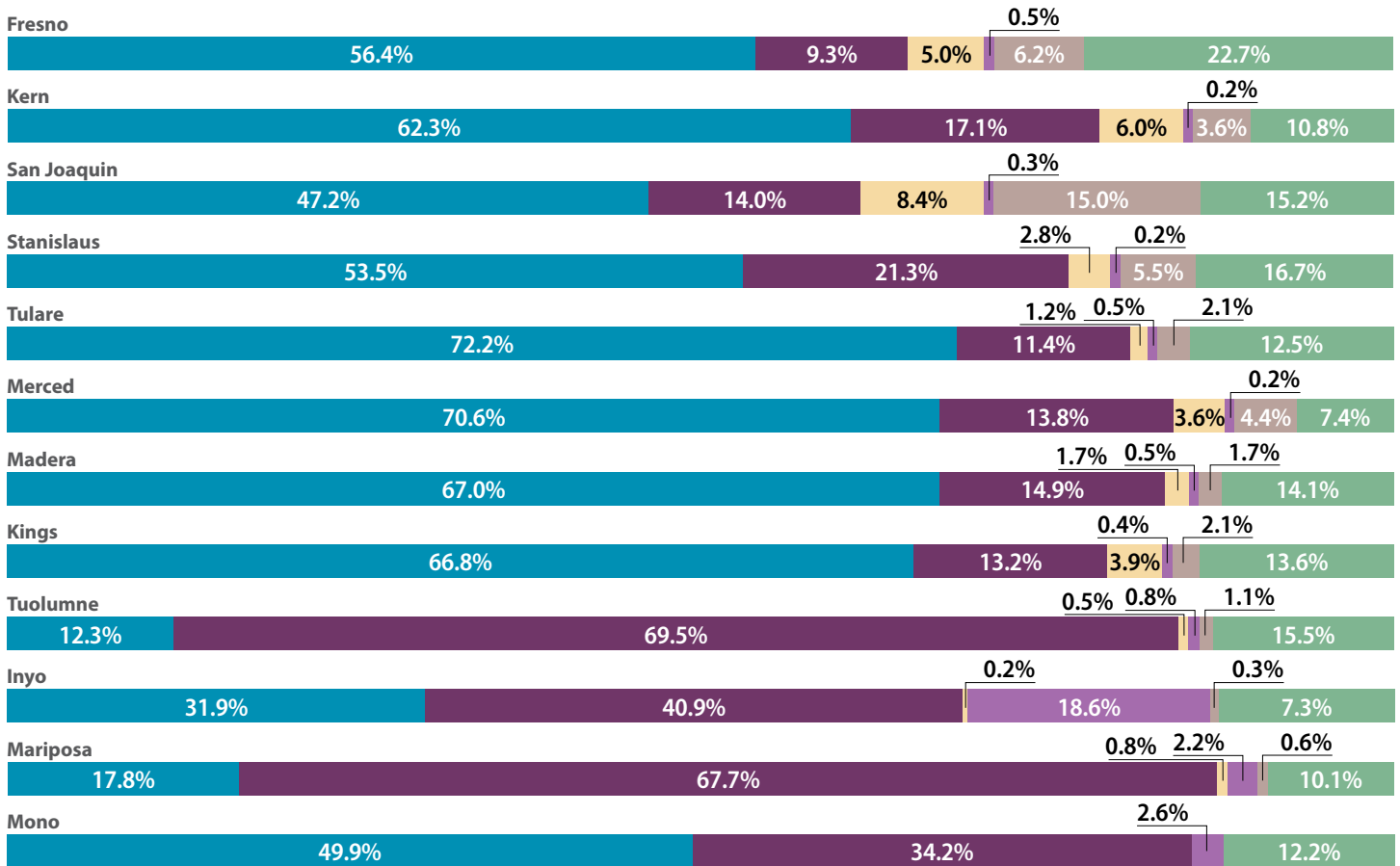
## MEDI-CAL

**FIGURE 7. Medi-Cal Enrollment, April 2024<sup>4,5</sup>**





**FIGURE 8. Medi-Cal Enrollment by Race/Ethnicity, April 2024<sup>6</sup>**



Legend: Latinx (blue), White (purple), Black (yellow), American Indian/Alaska Native (light purple), Asian (grey), Not Reported (green)

There was no data available for the Black or Asian race/ethnicity categories in Mono county.

**FIGURE 9. Medi-Cal Enrollment in Managed Care and Fee-For-Service (FFS), April 2024<sup>7</sup>**

|             | Medi-Cal MCP Enrollment | Central California Alliance | Health Net | Anthem Blue Cross | CalViva Health | Kaiser Permanente | Kern Health Systems | Health Plan of San Joaquin | Medi-Cal FFS Enrollment |
|-------------|-------------------------|-----------------------------|------------|-------------------|----------------|-------------------|---------------------|----------------------------|-------------------------|
| Fresno      | 509,145                 |                             |            | 155,721           | 348,349        | 5,075             |                     |                            | 21,963                  |
| Kern        | 459,407                 |                             |            | 31,573            |                | 19,858            | 407,976             |                            | 19,395                  |
| San Joaquin | 306,100                 |                             | 35,261     |                   |                | 22,319            |                     | 248,520                    | 14,623                  |
| Stanislaus  | 245,442                 |                             | 69,902     |                   |                | 4,404             |                     | 171,136                    | 10,680                  |
| Tulare      | 283,981                 |                             | 138,406    | 145,555           |                | 20                |                     |                            | 9,930                   |
| Merced      | 149,605                 | 149,605                     |            |                   |                |                   |                     |                            | -                       |
| Madera      | 78,693                  |                             |            | 29,230            | 48,579         | 884               |                     |                            | 3,531                   |
| Kings       | 64,440                  |                             |            | 25,522            | 38,831         | 87                |                     |                            | 3,106                   |
| Tuolumne    | 14,397                  |                             | 6,569      | 7,828             |                |                   |                     |                            | 805                     |
| Inyo        | 5,032                   |                             | 2,105      | 2,927             |                |                   |                     |                            | 602                     |
| Mariposa    | 5,693                   | 5,693                       |            |                   |                |                   |                     |                            | 235                     |
| Mono        | 2,999                   |                             | 1,086      | 1,913             |                |                   |                     |                            | 415                     |

Legend: (grey box) = Health Plan does not operate in this county. | (-) Notes a value unavailable due to masking.



**FIGURE 10. Community Supports Elections by Managed Care Plans, June 2024<sup>8</sup>**

| COMMUNITY SUPPORTS |   |  |  |
|--------------------|---|--|--|
|                    | Housing Transition Navigation Services  |  | Nursing Facility Transition/ Diversion to Assisted Living Facilities |
|                    | Housing Deposits                        |  | Community Transition Services/ Nursing Facility Transition to a Home |
|                    | Housing Tenancy and Sustaining Services |  | Personal Care and Homemaker Services                                 |
|                    | Short-Term Post-Hospitalization Housing |  | Environmental Accessibility Adaptations (Home Modifications)         |
|                    | Recuperative Care (Medical Respite)     |  | Medically-Supportive Food/ Medically Tailored Meals                  |
|                    | Respite Services                        |  | Sobering Centers   |
|                    | Day Habilitation Programs               |  | Asthma Remediation   |

|             | Anthem Blue Cross | CalViva Health | Kaiser Permanente | Kern Family Health Care | Health Net | Health Plan of San Joaquin | Central California Alliance for Health |
|-------------|-------------------|----------------|-------------------|-------------------------|------------|----------------------------|--|
| Fresno      | 14                | 14             | 14                |                         |            |                            |  |
| Kern        | 14                |                | 14                | 14                      |            |                            |  |
| San Joaquin |                   |                | 14                |                         | 14         | 14                         |  |
| Stanislaus  |                   |                | 14                |                         | 14         | 14                         |  |
| Tulare      | 14                |                | 14                |                         | 14         |                            |  |
| Merced      |                   |                |                   |                         |            |                            | 14                                     |
| Madera      | 14                | 14             | 14                |                         |            |                            |  |
| Kings       | 14                | 14             | 14                |                         |            |                            |  |
| Tuolumne    | 14                |                |                   |                         | 14         |                            |  |
| Inyo        | 14                |                |                   |                         | 14         |                            |  |
| Mariposa    |                   |                | 13                |                         |            |                            | 13                                     |
| Mono        | 14                |                |                   |                         | 14         |                            |  |

\*Some Community Supports may not be available to all members or in all areas of the county.

**FIGURE 11. Community Supports in Calendar Year 2022<sup>9</sup>**

TOTAL CENTRAL VALLEY COUNTIES MANAGED CARE PLAN (MCP) MEMBERS\*

1,930,918

|             | Total MCP Members | Number of Services Available** | Number of Services Provided <sup>§</sup> | Utilization Rate <sup>§§</sup> |
|-------------|-------------------|--------------------------------|--|--------------------------------|
| Fresno      | 468,312           | 10                             | 145                                      | 3                              |
| Kern        | 418,142           | 8                              | 923                                      | 22                             |
| San Joaquin | 277,399           | 9                              | 487                                      | 18                             |
| Stanislaus  | 223,408           | 9                              | 108                                      | 5                              |
| Tulare      | 243,482           | 12                             | 237                                      | 10                             |
| Merced      | 145,513           | 7                              | 579                                      | 40                             |
| Madera      | 70,433            | 10                             | 18                                       | 3                              |
| Kings       | 58,341            | 11                             | 299                                      | 51                             |
| Tuolumne    | 12,816            | 8                              | #  | #                              |
| Inyo        | 4,948             | 8                              | 0  | 0                              |
| Mariposa    | 5,071             | 8                              | #  | #                              |
| Mono        | 3,053             | 8                              | 0  | 0                              |

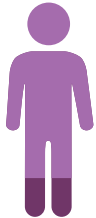
\* Total MCP Members Enrolled in Average Month | \*\* Number of Community Supports Offered by One or More MCPs | § Total Number of Community Supports Provided to MCP Members | §§ Number of Community Supports Received per 10,000 MCP Members | # Denotes a number under 11 or a number that one can reasonably use to deduce a number under 11



## MEDICARE

**FIGURE 12. Medicare Enrollment and Percent of Counties' Population, 2021<sup>4,9</sup>**

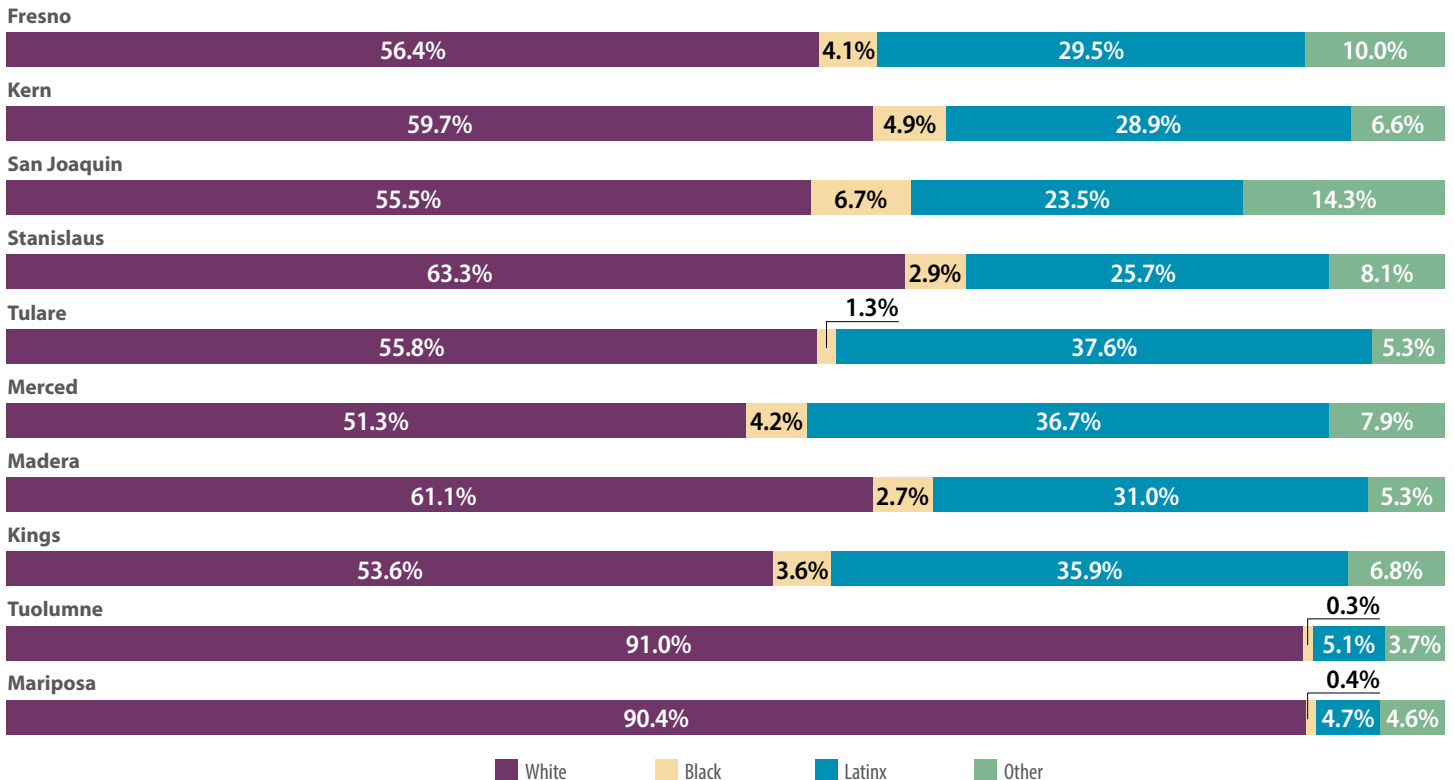
Total Medicare Coverage in the Central Valley  
**603,326 (13.7%)**



|             | Medicare        | Medicare Advantage | Fee-for-Service | Dual Eligible** (April 2024) <sup>5</sup> |
|-------------|-----------------|--------------------|-----------------|---|
| Fresno      | 133,485 (13.2%) | 58,947 (44.2%)     | 74,538 (55.8%)  | 45,731 (34.3%)                            |
| Kern        | 115,230 (12.7%) | 55,925 (48.5%)     | 59,305 (51.5%)  | 39,872 (34.6%)                            |
| San Joaquin | 105,826 (13.6%) | 56,973 (53.8%)     | 48,853 (46.2%)  | 31,641 (29.9%)                            |
| Stanislaus  | 83,791 (15.2%)  | 47,430 (56.6%)     | 36,361 (43.4%)  | 24,530 (29.3%)                            |
| Tulare      | 61,413 (13.0%)  | 18,874 (30.7%)     | 42,539 (69.3%)  | 24,531 (39.9%)                            |
| Merced      | 36,336 (12.9%)  | 7,985 (22.0%)      | 28,351 (78.0%)  | 13,164 (36.2%)                            |
| Madera      | 23,635 (15.1%)  | 10,781 (45.6%)     | 12,854 (54.4%)  | 6,497 (27.5%)                             |
| Kings       | 17,020 (11.2%)  | 5,469 (32.1%)      | 11,551 (67.9%)  | 5,951 (35.0%)                             |
| Tuolumne    | 15,608 (28.1%)  | 1,321 (8.5%)       | 14,287 (91.5%)  | 2,559 (16.4%)                             |
| Inyo        | 4,310 (22.7%)   | 430 (10.0%)        | 3,880 (90.0%)   | 787 (18.3%)                               |
| Mariposa    | 4,694 (27.4%)   | 497 (10.6%)        | 4,197 (89.4%)   | 882 (18.8%)                               |
| Mono        | 1,978 (15.0%)   | 123 (6.2%)         | 1,855 (93.8%)   | 228 (11.5%)                               |

\*\*Dual Eligibles are those eligible for Medicare and Medi-Cal, also referred to as Medi Medis. Due to small sample sizes and data privacy policies, percentages may equal more than 100 percent.

**FIGURE 13. Medicare Enrollment by Race/Ethnicity, 2021<sup>8</sup>**



Due to small sample sizes and data privacy policies, percentages may equal more than 100 percent. **Inyo** and **Mono** counties are excluded from this figure because their race/ethnicity data is masked in the Medicare Geographic Variation dataset.



## NOTES

All decimals rounded to nearest tenth.

1. United States Census Bureau, [2020 Census Redistricting Data](#), Accessed: April 12, 2024.
2. UCLA Center for Health Policy Research, [2022 California Health Interview Survey](#), Public Use File, Accessed: April 12, 2024.
3. Covered California, December 2023, [Active Member Profile](#), Accessed: April 12, 2024.
4. Department of Health Care Services, [Medi-Cal Certified Eligibles Data Table by County and Dual Status](#), April 2024, Accessed: June 12, 2024.
5. Department of Health Care Services, [Medi-Cal Certified Eligibles Data Table by County and Aid Code Group](#), April 2024, Accessed: June 12, 2024.
6. Department of Health Care Services, [Medi-Cal Certified Eligibles Data Table Race/Ethnicity and Age](#), April 2024, Accessed: June 12, 2024.
7. Department of Health Care Services, [Medi-Cal Managed Care Enrollment Report](#), April 2024, Accessed: June 12, 2024.
8. Department of Health Care Services, [CalAIM Community Supports – Managed Care Plan Elections](#), June 2024, Accessed: June 12, 2024.
9. Department of Health Care Services, [County-Level Data Summary for Community Supports in CY 2022](#), Accessed: April 12, 2024.
10. Centers for Medicare and Medicaid Services, [Medicare Geographic Variation – by National, State & County](#), 2021, Public Use File, Accessed: April 12, 2024.

Each year ITUP releases Regional Health Coverage fact sheets for its 10 ITUP Regional Equity Collaborative locations (formerly ITUP Regional Workgroups). These publications are overviews highlighting key coverage facts across all coverage types county-by-county.

### About ITUP

ITUP is an independent, nonprofit, health policy institute that has been a central voice in the California health landscape for more than two decades. ITUP serves as a trusted expert, grounded in statewide and regional connections with a network of policymakers, health care leaders, and stakeholders. The mission of ITUP is to promote innovative and workable policy solutions that expand health care access and improve the health of all Californians.

ITUP is generously supported by the following funders:

- California Health Care Foundation
- The California Endowment
- The California Wellness Foundation



@ITUP



@InsuretheUninsuredProject



@InsuretheUninsuredProject



www.ITUP.org