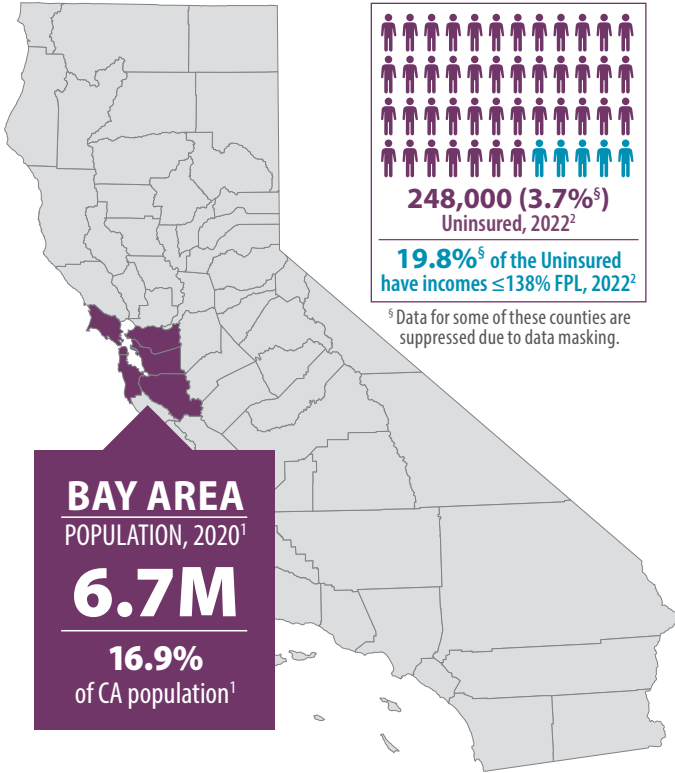


# Bay Area Counties

July 2024

ALAMEDA, CONTRA COSTA, MARIN, SAN FRANCISCO, SAN MATEO, SANTA CLARA



	Population <sup>1</sup>	Uninsured, 2022 <sup>2</sup>	Uninsured, Incomes ≤ 138% Federal Poverty Level (FPL), 2022 <sup>2</sup>
<b>Santa Clara</b>	1,936,259	89,000 (4.6%)	20,000 (1.0%)
<b>Alameda</b>	1,682,353	68,000 (4.0%)	14,000 (0.8%)
<b>Contra Costa</b>	1,165,927	23,000 (2.0%*)	-
<b>San Francisco</b>	873,965	50,000 (5.7%*)	15,000 (1.7%)
<b>San Mateo</b>	764,442	14,000 (1.8%*)	-
<b>Marin</b>	262,321	4,000 (1.5%*)	-

\* Data for these counties are considered statistically unstable. | (-) Notes a value unavailable due to data masking.

**FIGURE 1. Race/Ethnicity Among the Uninsured in Bay Area Counties, 2022<sup>2</sup>**

Percent by Race	County Population							Insured							Uninsured						
	Latinx	White	Black	AI/AN	Asian	NH/PI	2+	Latinx	White	Black	AI/AN	Asian	NH/PI	2+	Latinx	White	Black	AI/AN	Asian	NH/PI	2+
<b>Santa Clara</b>	27.5%	33.3%	1.6%	-	33.5%	-	4.0%	93.5%*	99.7%*	100.0%*	-	91.4%*	-	100.0%*	6.5%*	-	-	-	8.6%*	-	-
<b>Alameda</b>	23.5%	33.4%	12.4%	-	26.7%	-	3.0%	86.7%	99.7%*	97.6%*	-	97.1%*	-	100.0%*	13.3%	-	-	-	2.9%*	-	-
<b>Contra Costa</b>	25.7%*	45.2%	5.5%	-	18.9%	-	4.4%	97.6%*	99.4%*	98.2%*	-	96.1%*	-	93.4%*	2.4%*	-	-	-	3.9%*	-	-
<b>San Francisco</b>	15.1%	44.0%	8.6%	-	27.5%	-	4.1%*	83.9%*	98.4%*	97.1%*	-	90.0%*	-	100.0%*	16.1%*	1.6%*	-	-	10.0%*	-	-
<b>San Mateo</b>	26.4%*	40.5%	4.5%*	-	22.8%	-	4.9%*	97.7%*	100.0%*	100.0%*	-	94.4%*	-	100.0%*	-	-	-	-	5.6%*	-	-
<b>Marin</b>	18.0%	71.5%	1.6%*	-	5.5%	-	3.5%*	100.0%*	97.9%	100.0%*	-	100.0%*	-	100.0%*	-	2.1%*	-	-	-	-	-

AI/AN=American Indian/Alaska Native | NH/PI= Native Hawaiian/Pacific Islander | 2+= Two or More Races | \* Data for these counties are considered statistically unstable. (-) Notes a value unavailable due to data masking



**FIGURE 2. Employer-Sponsored Coverage, 2022<sup>2</sup>**



**Total Employer-Sponsored Coverage in the Bay Area**  
**3,961,000 (59.2%)**

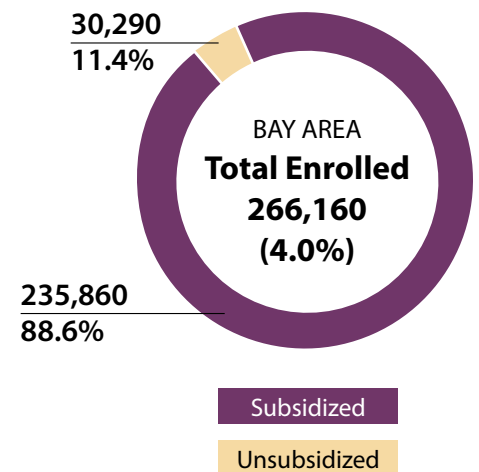
	Employer-Sponsored Coverage Among Bay Area Counties	Race/Ethnicity Breakdown Among Bay Area Counties with Employer-Sponsored Coverage						
		Latinx	White	Black	AI/AN	Asian	NH/PI	2+
<b>Santa Clara</b>	1,239,000 (67.0%)	23.1%	34.5%	2.1%	-	34.8%	-	5.4%
<b>Alameda</b>	946,000 (59.3%)	15.8%	39.9%	9.2%	-	29.4%	-	4.0%
<b>Contra Costa</b>	684,000 (60.2%)	27.9%*	43.7%	4.5%	-	18.5%	-	5.0%
<b>San Francisco</b>	452,000 (55.9%)	14.1%	48.7%	6.1%*	-	24.2%	-	6.0%*
<b>San Mateo</b>	490,000 (67.2%)	21.9%*	43.4%	3.7%*	-	24.3%	-	5.9%*
<b>Marin</b>	150,000 (61.3%)	24.4%	62.3%	2.6%*	-	6.5%	-	4.1%*

AI/AN=American Indian/Alaska Native | NH/PI = Native Hawaiian/Pacific Islander | 2+ = Two or More Races | \* Data for these counties are considered statistically unstable (-) Notes a value unavailable due to data masking

## COVERED CALIFORNIA

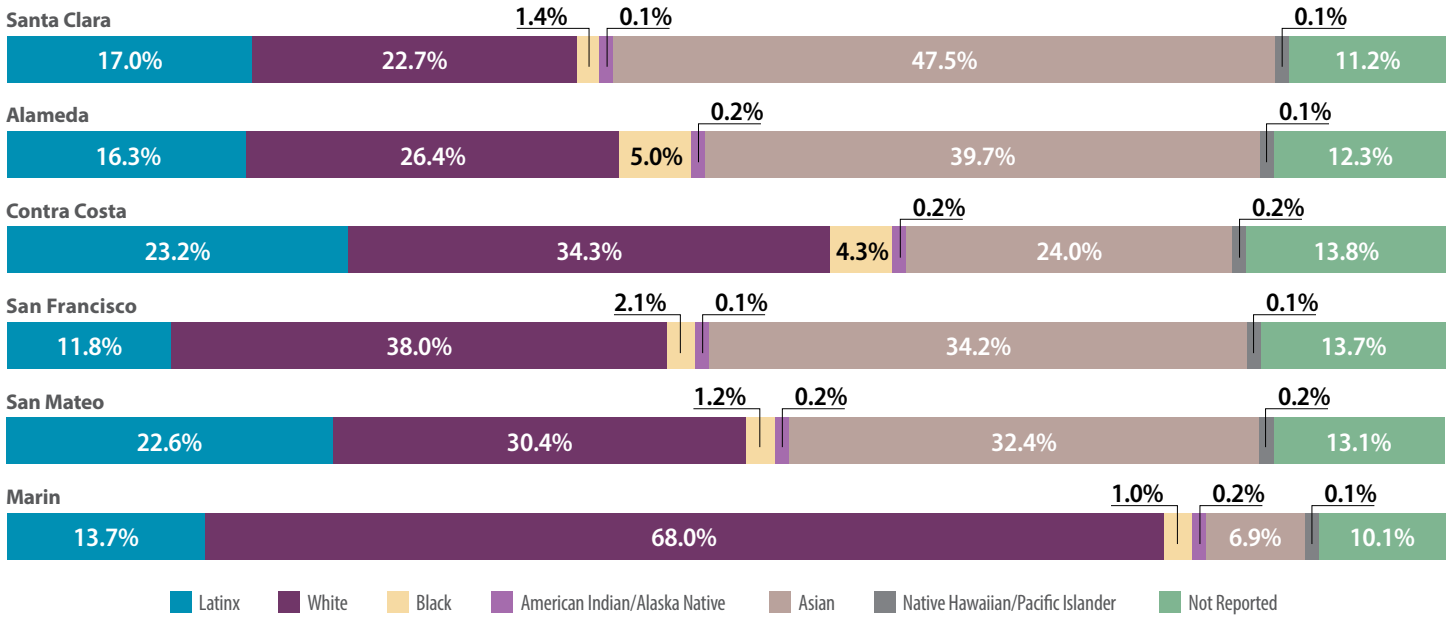
**FIGURE 3. Percent of Counties’ Populations Enrolled in Covered California, December 2023<sup>3</sup>**

	Total Enrollment	Subsidized Enrollees	Unsubsidized Enrollees
<b>Santa Clara</b>	65,490 (3.4%)	57,750 (88.2%)	7,740 (11.8%)
<b>Alameda</b>	72,330 (4.3%)	65,010 (89.9%)	7,310 (10.1%)
<b>Contra Costa</b>	51,970 (4.5%)	47,510 (91.4%)	4,460 (8.6%)
<b>San Francisco</b>	33,920 (3.9%)	28,380 (83.7%)	5,540 (16.3%)
<b>San Mateo</b>	28,230 (3.7%)	25,230 (89.4%)	3,000 (10.6%)
<b>Marin</b>	14,220 (5.4%)	11,980 (84.2%)	2,240 (15.8%)





**FIGURE 4. Covered California Enrollment by Race/Ethnicity, December 2023<sup>3</sup>**



**FIGURE 5. Covered California Enrollment by FPL, December 2023<sup>3</sup>**

	Under 138% FPL	Between 138% and 400% FPL	Between 400% and 600% FPL	Over 600% FPL
Santa Clara	4.2%	70.7%	11.4%	7.7%
Alameda	4.7%	72.9%	10.9%	6.9%
Contra Costa	5.3%	71.5%	11.2%	7.4%
San Francisco	3.7%	67.1%	11.5%	9.5%
San Mateo	3.5%	68.3%	13.2%	8.8%
Marin	2.3%	60.9%	15.0%	12.5%

Enrollments where the FPL of the member is not known are not included

**FIGURE 6. Covered California Enrollment by Health Plan, December 2023<sup>3</sup>**

	Anthem Blue Cross	Health Net	Kaiser Permanente	Blue Shield	Aetna Health CVS	Molina Healthcare	LA Care Health Plan	Oscar Health Plan	Valley Health Plan	Chinese Community Health Plan	Western Health Advantage	Sharp Health Plan
Santa Clara	5,600	10	36,970	5,400	10	10	10	10	17,480	-	10	10
Alameda	3,960	10	55,790	12,520	-	10	10	10	30	10	10	10
Contra Costa	1,260	10	39,720	10,950	10	10	10	10	10	10	10	-
San Francisco	3,310	10	19,460	8,610	-	10	10	290	10	2,230	10	-
San Mateo	690	10	20,830	6,010	10	-	10	100	20	580	-	-
Marin	620	10	8,450	3,470	-	10	10	10	10	10	1,660	-

Covered California's privacy policy rounds all figures to the nearest 10. As a result, grand totals shown may be slightly different from the totals in the individual plan data.

(-) Notes a value unavailable due to data masking

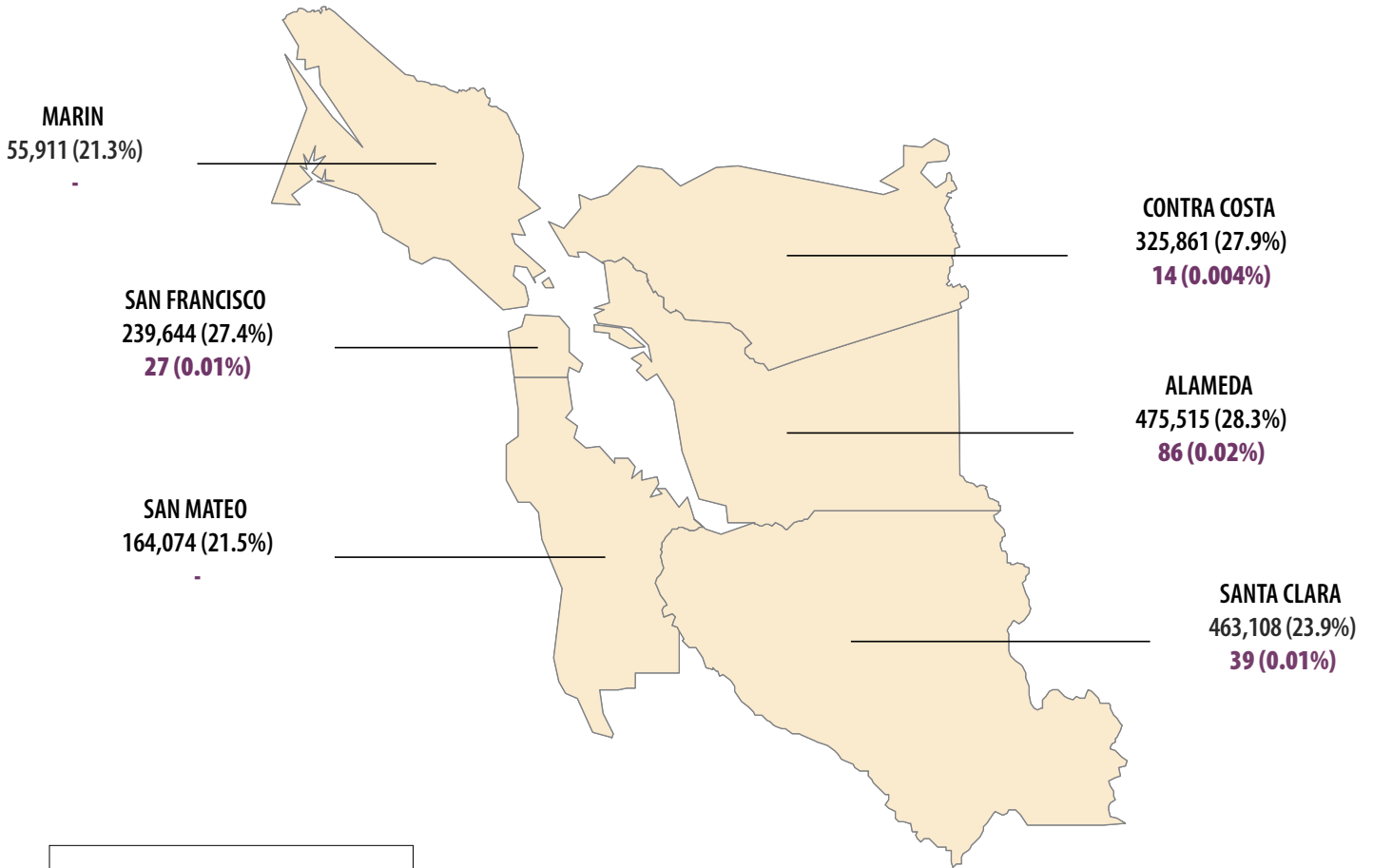


# MEDI-CAL

FIGURE 7. Medi-Cal Enrollment, January 2024<sup>4,5</sup>



Total Medi-Cal Coverage in the Bay Area  
1,724,113 (25.8%)

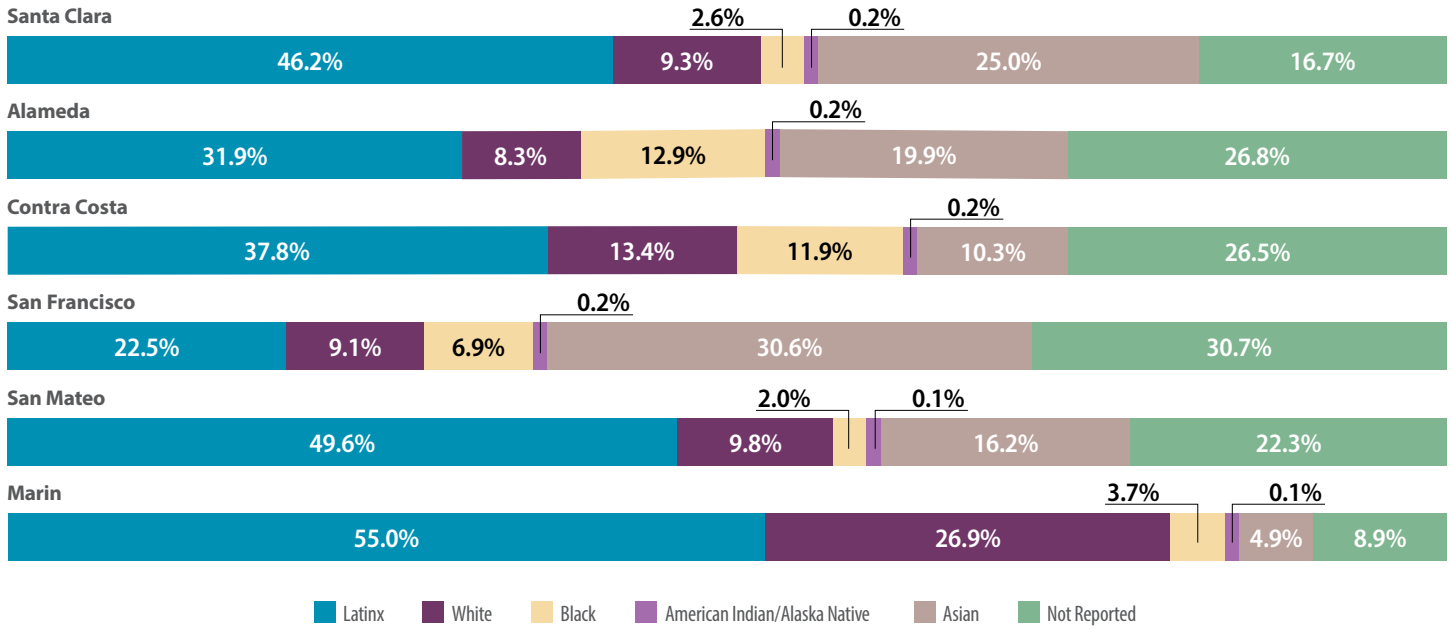


COUNTY  
Total Medi-Cal Enrollment  
Medi-Cal Enrollment, Undocumented

(-) Notes a value unavailable due to data masking.



**FIGURE 8. Medi-Cal Enrollment by Race/Ethnicity, January 2024<sup>6</sup>**



**FIGURE 9. Medi-Cal Enrollment in Managed Care and Fee-For-Service (FFS), February 2024<sup>7</sup>**

	Medi-Cal Managed Care Plan Enrollment	Anthem Blue Cross	Santa Clara Family Health	Kaiser Permanente	Alameda Alliance for Health	Contra Costa Health Plan	San Francisco Health Plan	Health Plan of San Mateo	Partnership Health Plan of California	Medi-Cal FFS Enrollment
Santa Clara	440,153	102,152	295,839	42,162						22,955
Alameda	461,666			64,591	397,075					13,849
Contra Costa	315,795			52,766		263,029				10,066
San Francisco	226,601	33,935		18,601			174,065			13,043
San Mateo	160,132			14,031				146,101		3,942
Marin	54,480			7,301					47,179	1,431

= Health Plan does not operate in this county



**FIGURE 10. Community Supports Elections by Managed Care Plans, January 2024<sup>8</sup>**

COMMUNITY SUPPORTS	
Housing Transition Navigation Services	Nursing Facility Transition/ Diversion to Assisted Living Facilities
Housing Deposits	Community Transition Services/ Nursing Facility Transition to a Home
Housing Tenancy and Sustaining Services	Personal Care and Homemaker Services
Short-Term Post-Hospitalization Housing	Environmental Accessibility Adaptations (Home Modifications)
Recuperative Care (Medical Respite)	Medically-Supportive Food/ Medically Tailored Meals
Respite Services	Sobering Centers
Day Habilitation Programs	Asthma Remediation

	Anthem Blue Cross	Santa Clara Family Health	Kaiser Permanente	Alameda Alliance for Health	Contra Costa Health Plan	San Francisco Health Plan	Health Plan of San Mateo	Partnership Health Plan of California
Santa Clara	14	14	14					
Alameda	12		14	13				
Contra Costa			14		13			
San Francisco	14		14			11		
San Mateo			9				9	
Marin			8					8

\*Some Community Supports may not be available to all members or in all areas of the county.

**FIGURE 11. Community Supports in Calendar Year 2022<sup>9</sup>**

**TOTAL BAY AREA  
MANAGED CARE PLAN (MCP)  
MEMBERS\***



	Total MCP Members	Number of Services Available**	Number of Services Provided <sup>§</sup>	Utilization Rate <sup>§§</sup>
Santa Clara	379,958	13	1,286	34
Alameda	387,397	10	5,678	147
Contra Costa	266,575	11	1,587	60
San Francisco	186,984	11	297	16
San Mateo	141,036	9	1,423	101
Marin	47,943	6	351	73

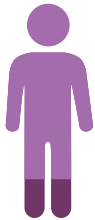
\* Total MCP Members Enrolled in Average Month | \*\* Number of Community Supports Offered by One or More MCPs  
<sup>§</sup> Total Number of Community Supports Provided to MCP Members | <sup>§§</sup> Number of Community Supports Received per 10,000 MCP Members



## MEDICARE

**FIGURE 12. Medicare Enrollment and Percent of Counties' Population, 2021<sup>4,10</sup>**

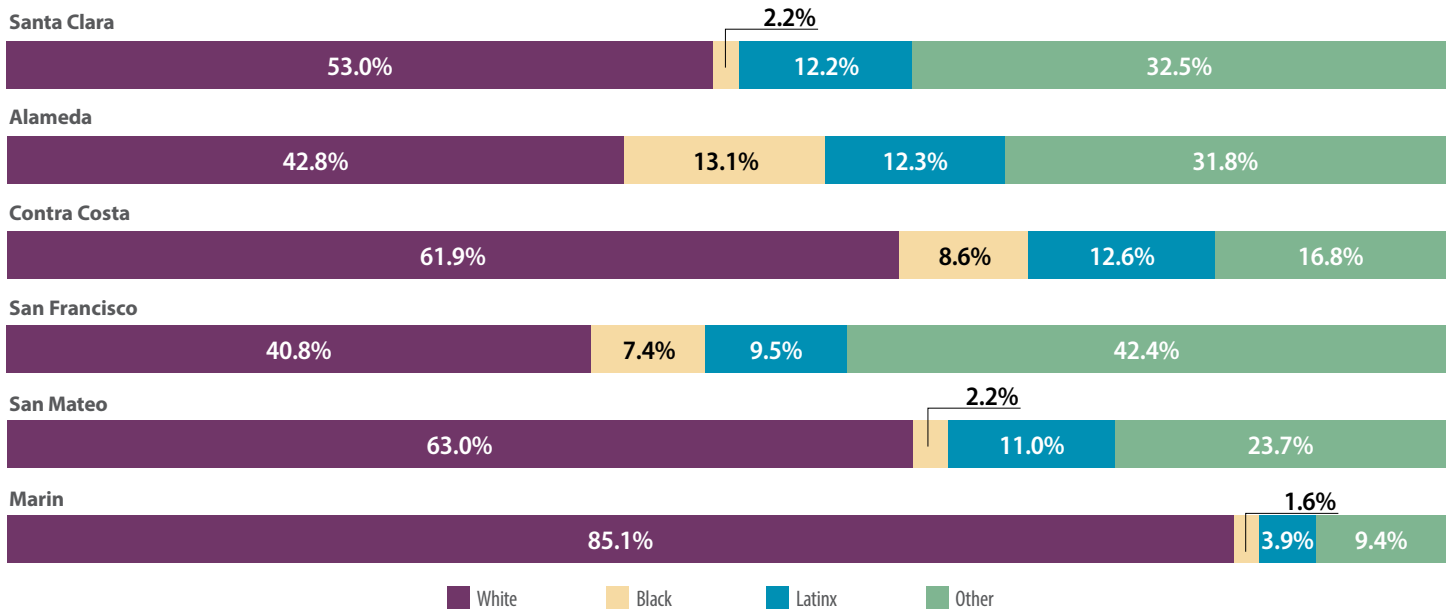
**Total Medicare Coverage in the Bay Area**  
**963,915 (14.4%)**



	Medicare	Medicare Advantage	Fee-For-Service	Dual Eligible** (January 2024) <sup>5</sup>
<b>Santa Clara</b>	246,448 (12.7%)	136,867 (55.5%)	109,581 (44.5%)	64,227 (26.1%)
<b>Alameda</b>	222,906 (13.2%)	125,018 (56.1%)	97,888 (43.9%)	64,237 (28.8%)
<b>Contra Costa</b>	186,564 (16.0%)	107,111 (57.4%)	79,453 (42.6%)	35,984 (19.3%)
<b>San Francisco</b>	135,007 (15.4%)	69,775 (51.7%)	65,232 (48.3%)	52,859 (39.2%)
<b>San Mateo</b>	116,923 (15.3%)	65,872 (56.3%)	51,051 (43.7%)	19,771 (16.9%)
<b>Marin</b>	56,067 (21.4%)	27,064 (48.3%)	29,003 (51.7%)	6,083 (10.8%)

\*\*Dual Eligibles are those eligible for Medicare and Medi-Cal, also referred to as Medi Medis

**FIGURE 13. Medicare Enrollment, by Race/Ethnicity, 2021<sup>10</sup>**





## NOTES

All decimals rounded to nearest tenth.

1. United States Census Bureau, [2020 Census Redistricting Data](#), Accessed: March 5, 2024.
2. UCLA Center for Health Policy Research, [2022 California Health Interview Survey](#), Public Use File, Accessed: March 14, 2024.
3. Covered California, December 2023, [Active Member Profile](#), Accessed: March 22, 2024.
4. Department of Health Care Services, [Medi-Cal Certified Eligibles Data Table by County and Dual Status](#), January 2024, Accessed: March 22, 2024.
5. Department of Health Care Services, [Medi-Cal Certified Eligibles Data Table by County and Aid Code Group](#), January 2024, Accessed: March 22, 2024.
6. Department of Health Care Services, [Medi-Cal Certified Eligibles Data Table Race/Ethnicity and Age](#), January 2024, Accessed: March 22, 2024.
7. Department of Health Care Services, [Medi-Cal Managed Care Enrollment Report](#), February 2024, Accessed: March 22, 2024.
8. Department of Health Care Services, [CalAIM Community Supports – Managed Care Plan Elections](#), January 2024, Accessed: March 22, 2024.
9. Department of Health Care Services, [County-Level Data Summary for Community Supports in CY 2022](#), Accessed: March 22, 2024.
10. Centers for Medicare and Medicaid Services, [Medicare Geographic Variation – by National, State & County](#), 2021, Public Use File, Accessed: March 22, 2024.

Each year ITUP releases Regional Health Coverage fact sheets for its 10 ITUP Regional Equity Collaborative Locations (formerly ITUP Regional Workgroups). These publications are overviews highlighting key coverage facts across all coverage types county-by-county.

## About ITUP

ITUP is an independent, nonprofit, health policy institute that has been a central voice in the California health landscape for more than two decades. ITUP serves as a trusted expert, grounded in statewide and regional connections with a network of policymakers, health care leaders, and stakeholders. The mission of ITUP is to promote innovative and workable policy solutions that expand health care access and improve the health of all Californians.

ITUP is generously supported by the following funders:

- California Health Care Foundation
- The California Endowment
- The California Wellness Foundation



@ITUP



@InsuretheUninsuredProject



@InsuretheUninsuredProject



www.ITUP.org