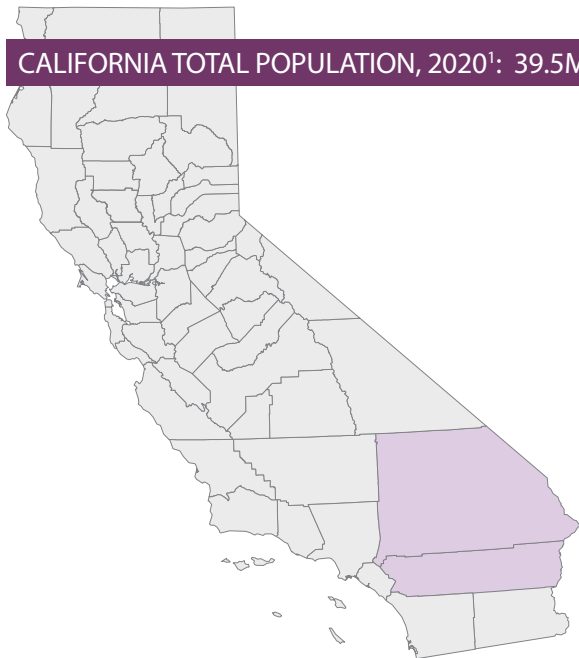


Inland Empire Counties

May 2022

RIVERSIDE, SAN BERNARDINO

CALIFORNIA TOTAL POPULATION, 2020¹: 39.5M



	Population ¹	Uninsured, 2020 ²	Uninsured, Incomes ≤ 138% Federal Poverty Level (FPL), 2020 ²
Riverside	2,418,185	196,000 (8.2%)	60,000 (9.3%)
San Bernardino	2,181,654	108,000 (5.1%)	38,000 (6.3%*)

* Data for these counties are considered statistically unstable
(-) Notes a value unavailable due to data masking

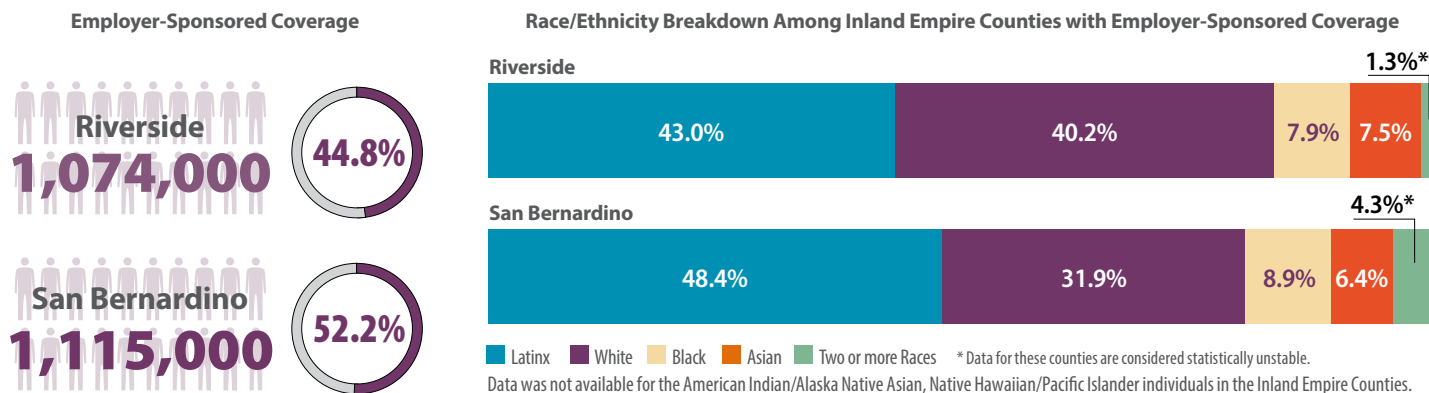
**INLAND EMPIRE COUNTIES
TOTAL POPULATION, 2020¹: 4.6M**

FIGURE 1. Race/Ethnicity Among the Uninsured, 2020²

Percent by Race	County Population							Insured							Uninsured						
	Latinx	White	Black	AI/AN	Asian	NH/PI	2+	Latinx	White	Black	AI/AN	Asian	NH/PI	2+	Latinx	White	Black	AI/AN	Asian	NH/PI	2+
Riverside	47.3%	37.8%	5.6%	0.6%*	6.0%	-	2.7%	87.2%	97.1%*	98.2%*	100%*	86.3%*	-	95.2%*	12.8%	2.9%*	-	-	13.7%*	-	-
San Bernardino	51.5%	31.1%	6.7%	-	7.1%	-	3.6%	93.9%	96.7%*	97.2%*	-	92.8%*	-	95.3%*	6.1%	3.3%*	-	-	7.2%*	-	-

AI/AN=American Indian/Alaska Native | NH/PI = Native Hawaiian/Pacific Islander | 2+ = Two or More Races | * Data for these counties are considered statistically unstable. | (-) Notes a value unavailable due to data masking

FIGURE 2. Employer-Sponsored Coverage, 2020²





COVERED CALIFORNIA

FIGURE 3. Percent of Counties' Populations Enrolled in Covered California, December 2021³

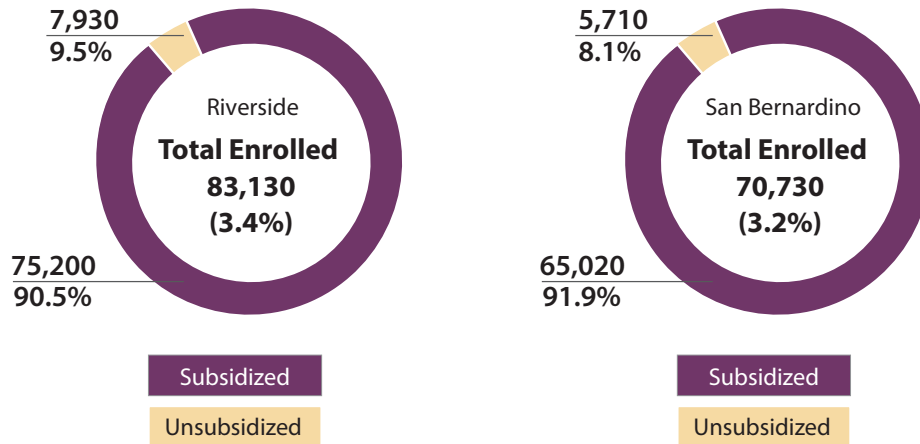


FIGURE 4. Covered California Enrollment by Race/Ethnicity, December 2021³

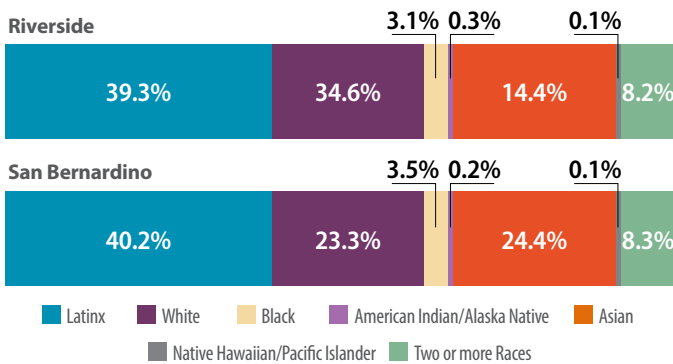


FIGURE 5. Covered California Enrollment by FPL, December 2021³

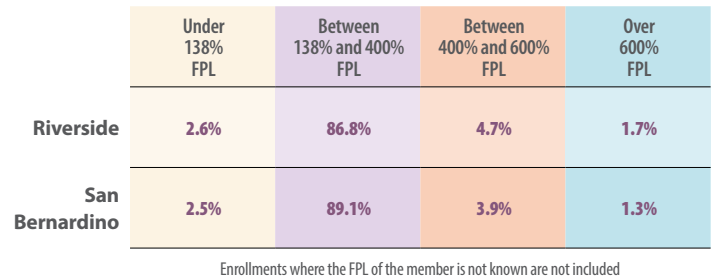


FIGURE 6. Covered California Enrollment by Health Plan, December 2021³

	Anthem Blue Cross	Blue Shield	Health Net	Kaiser Permanente	L.A. Care Health Plan	Molina Healthcare	Oscar Health Plan	Sharp Health Plan
Riverside	2,050	23,980	23,520	23,260	10	10,310	10	10
San Bernardino	1,680	21,390	19,150	21,160	10	7,340	-	-

Covered California's privacy policy rounds all figures to the nearest 10. As a result, grand totals shown may be slightly different from the totals in the individual plan data



MEDI-CAL

FIGURE 7. Medi-Cal Enrollment, February 2022^{4,5}

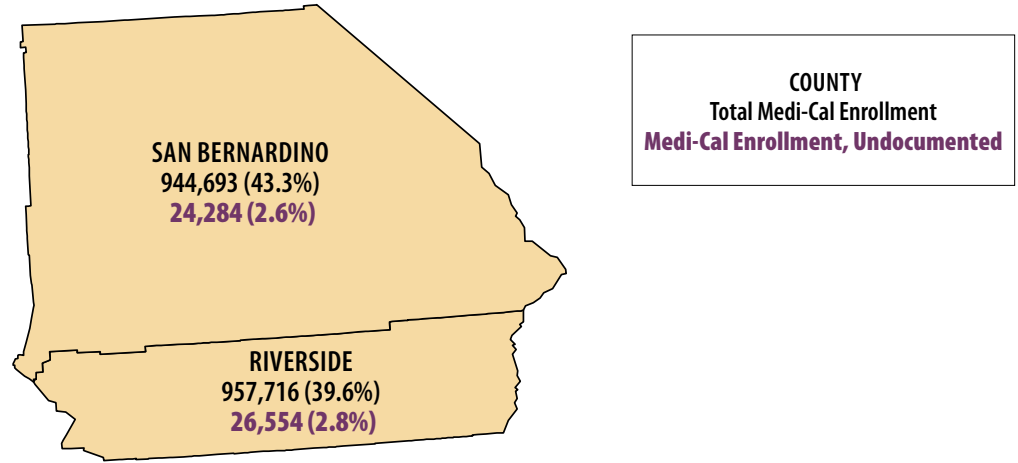


FIGURE 8. Medi-Cal Enrollment by Race/Ethnicity February 2022⁶

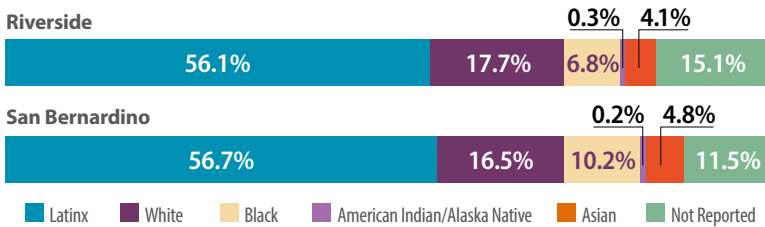
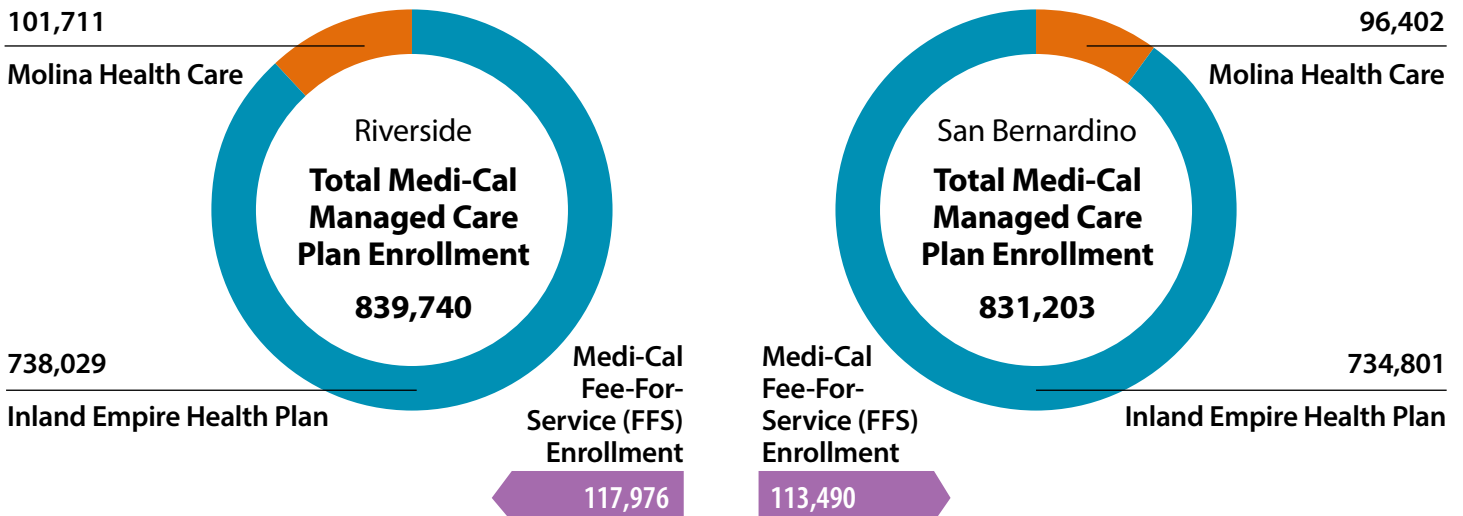


FIGURE 9. Expected [CaAIM](#) Implementation Start Date



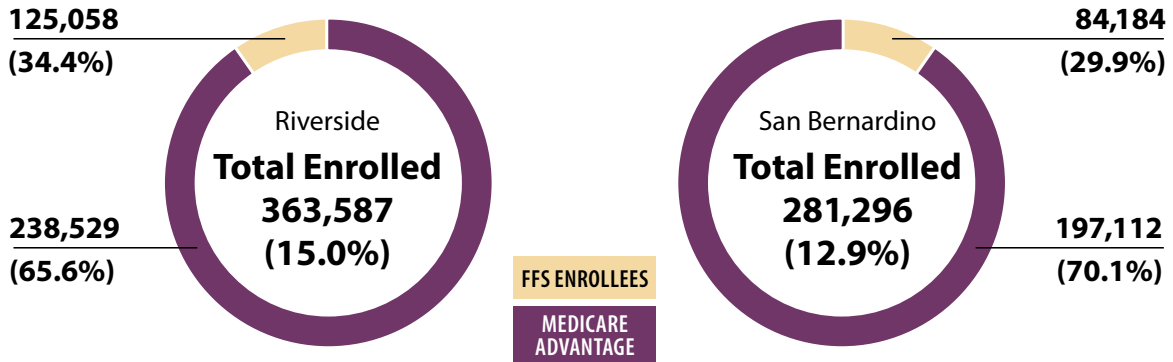
FIGURE 10. Medi-Cal Enrollment by Managed Care and Fee-for-Service (FFS), February



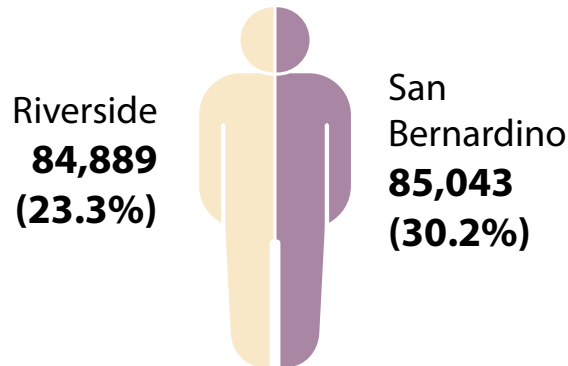


MEDICARE

FIGURE 11. Medicare Enrollment and Percent of Counties' Population, 2020^{5,8}

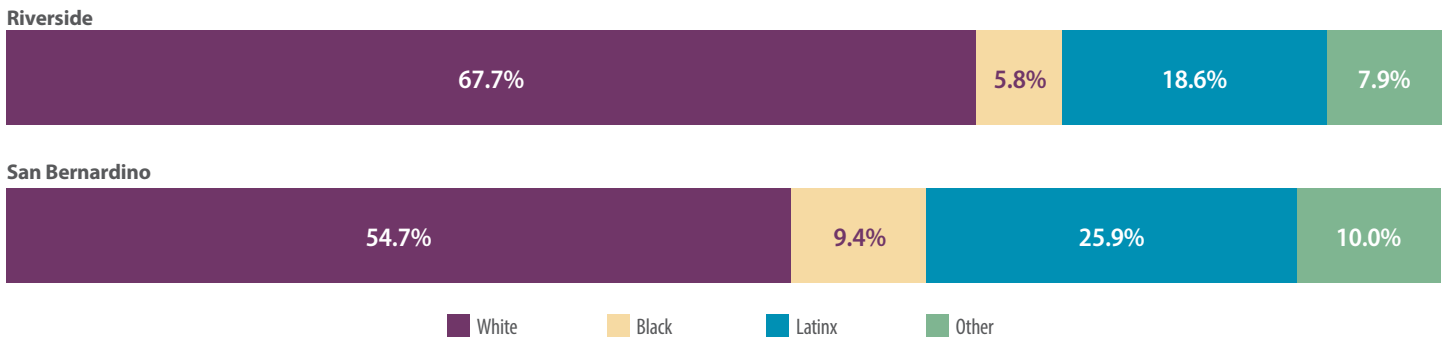


Dual Eligibles** (January 2022)



**Dual Eligibles are those eligible for Medicare and Medi-Cal, also referred to as Medi Medis

FIGURE 12. Medicare Enrollment by Race/Ethnicity, 2020⁸





DATA SNAPSHOT: SOCIAL DRIVERS OF HEALTH

Social Drivers of Health (SDoH), also known as Social Determinants of Health, refer to the conditions in environments where people are born, live, learn, work, play, worship, and age that influence their health risks and overall wellbeing. Some of these drivers include access to safe housing, nutritious food, parks and green space, and even broadband and internet connectivity, all of which impact the ability of and opportunity for Californians to live their healthiest lives.

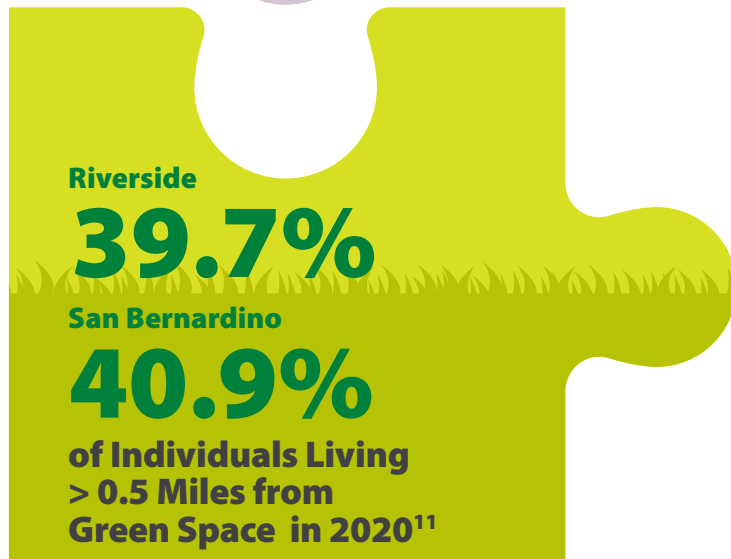
Housing Assistance



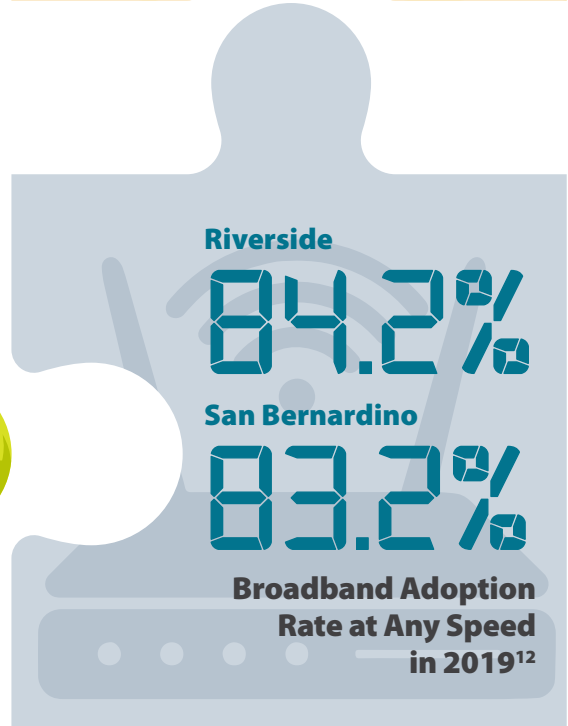
Food Security



Access to Green Space



Broadband Access





NOTES

All decimals rounded to nearest tenth.

1. United States Census Bureau, [2020 Census Redistricting Data](#), Accessed: March 16, 2022.
2. UCLA Center for Health Policy Research, [2020 California Health Interview Survey](#), Public Use File, Accessed: April 17, 2022.
3. Covered California, December 2021, [Active Member Profile](#), Accessed: March 31, 2022.
4. Department of Health Care Services, [Medi-Cal Certified Eligibles Data Table by County and Dual Status](#), February 2022, Accessed: March, 31 2022.
5. Department of Health Care Services, [Medi-Cal Certified Eligibles Data Table by County and Aid Code Group](#), February 2022, Accessed: March 31, 2022.
6. Department of Health Care Services, [Medi-Cal Certified Eligibles Data Table Race/Ethnicity and Age](#), February 2022, Accessed: March 31, 2022.
7. Department of Health Care Services, [Medi-Cal Managed Care Enrollment Report](#), February 2022, Accessed: March 31, 2022.
8. Centers for Medicare and Medicaid Services, [Medicare Geographic Variation - by National, State & County](#), 2020, Public Use File, Accessed: March 31, 2022
9. California Interagency Council on Homelessness, [Homeless Data Integration System](#) Public Use File, 2021, Accessed: April 17, 2022.
10. California Department of Social Services, [CalFresh Data Dashboard](#), 2021, Accessed: April 17, 2022.
11. Let's Get Healthy California, Data Dashboard for Aging, [Strategy C: Outdoor & Community Spaces for All Ages](#), 2020, Accessed: April 17, 2022.
12. California Public Utilities Commission, [EOY 2019 CA Fixed Broadband Adoptions by Population](#), Accessed: April 17, 2022.

About ITUP

ITUP is an independent, nonprofit, health policy institute that has been a central voice in the California health landscape for more than two decades. ITUP serves as a trusted expert, grounded in statewide and regional connections with a network of policymakers, health care leaders, and stakeholders. The mission of ITUP is to promote innovative and workable policy solutions that expand health care access and improve the health of all Californians.

ITUP is generously supported by the following funders:

- California Community Foundation
- California Health Care Foundation
- The California Endowment
- The California Wellness Foundation



@ITUP



@InsuretheUninsuredProject



@InsuretheUninsuredProject



www.itup.org